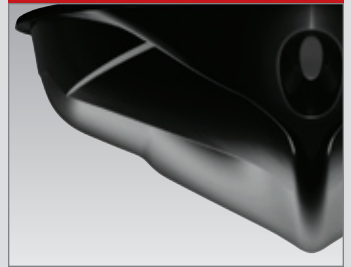


MUSCLECRAFT – 2012

RXP-X™ 260



ALL-NEW T³ Hull



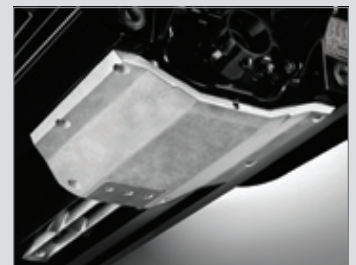
ALL-NEW Ergolock system



ALL-NEW Adjustable rear sponsons



ALL-NEW Trim tabs



NEW intake grate and ride plate



ALL-NEW X-Gauge with boost indicator

Introducing the best handling, performance-oriented watercraft on the market. With its Rotax® race-proven, muscle engine and the revolutionary new T³ Hull™ for more traction on the water, it gives the rider all the advantages. The new Ergolock™ system, includes a narrow racing seat, adjustable handlebars and angled footwells that have been tweaked to minimize upper body fatigue and provide more leverage. Add on the adjustable sponsons and trim tabs, and you'll have all the advantages to leave everyone behind on a buoy course.



SPECIFICATIONS

DIMENSIONS

Length	130.6" / 331.6 cm
Width	48.3" / 122.7 cm
Height	45.2" / 114.7 cm
Weight (dry)	812 lb / 368.3 kg
Rider capacity	2
Fuel capacity	15.9 gal / 60 l
Storage capacity	30.8 gal / 116.6 l

ENGINE

Type	1503 XHO Rotax 4-TEC® engine
Intake system	Supercharged with external intercooler, 60 mm throttle body
Bore x stroke	100 mm x 63.4 mm
Displacement	1,494 cc
Compression ratio	8.4:1
Cooling	Closed-Loop Cooling System (CLCS)
Fuel type	87 octane – minimum 91 octane – recommended

DRIVE UNIT

Propulsion system	Sea-Doo® Direct Drive
Jet pump	Aluminum, axial flow, single stage, large hub with 10-vane stator
Transmission	Electronic iBR™
Impeller	Stainless steel

ELECTRICAL

Ignition	Digital induction
Starter	Electric
Battery	12 V

HULL AND COMPONENTS

Type	ALL-NEW T³ Hull
Color	Dayglow Yellow

ITC / **iBR** / **T³** / **CLCS** / **ECO**



HULL AND COMPONENTS

- iControl™ The “Brain” that integrates and controls all systems to create the best possible ride.
- ALL-NEW** T³ Hull This new hull allows more precise cornering, enhances lean in, cuts water and tracks better, extremely responsive.
- ALL-NEW** Ergolock system Combination of ergonomic features allow amazing control while cornering with less upper body fatigue. It features a narrow racing seat with knee grab design, adjustable handlebars and angled footwell wedges that allow you to “lock” in when cornering hard. This results in faster turns and more time on the water.
- ALL-NEW** Adjustable rear sponsons... These stabilizers help you resist roll and lean in. They can be easily adjusted to 3 positions: Higher for more stability and looser feel; lower for less stability and more aggressive turning.
- ALL-NEW** Trim tabs Limit bow rise and improve parallelism to water. Also increase tracking in rough water conditions and provide more tunability.
- High-performance electric Provides pre-set positions for quick settings when adjusting boat trim, maximizes acceleration and high-speed stability.
- VTS™ (Variable Trim System)
- iCatch™ bow cup..... Equipped with a quick-attach device, this system helps to load and unload the watercraft from the iCatch trailer. Also secures the watercraft during transportation.
- Interactive Multifunction Reports 31 key operating functions:
Digital Information Center Fuel level, Tachometer, Speedometer, **ALL-NEW** Boost indicator, Hour meter, **Compass, Clock, Fuel consumption meter, Time/Distance to empty, Touring /Sport mode, ECO mode, VTS preset, Top/average speed/RPM, Lap timer, F-N-R indicator, Low fuel level, Low oil level, Low oil pressure, Low voltage, Overheat, Engine temperature, Hi voltage, Check engine, Sensor check, Battery protection, Key (wrong key), L-Key / R-Key, Maintenance info, Error codes.**
- Digitally Encoded Security..... Industry's first digitally encoded theft-deterrent System (D.E.S.S.™)
- Off-Throttle Assisted** Provides the operator with additional steering effect in off-throttle situations for greater maneuverability.
Steering (O.T.A.S.™)
- Quick latch fuel filler design Tow hook
- Bumpers Dual drain plugs
- Front splash deflector External exhaust cooling flush attachment
- Wide-angle mirrors Emergency floating lanyard
- Swim platform carpet w/ Sea-Doo logo Seat strap
- Rear grab handle Operator's guide, instructional video and booklet

X-PACKAGE

- X-Coloration seat Race-inspired design for comfort and great looks providing seating for three including spotter for watersports.
- X-Handlebars with A.E.S.™ The only fully adjustable handlebar in the industry. (Adjustable Ergonomic Steering) With A.E.S. the rider can adjust the handlebar width and grip for a fully customized ride.
- X-Tra traction carpet..... Exclusive Sea-Doo pattern for unmatched traction and comfort.
- ALL-NEW** X-Gauge with..... Shows the boost pressure in real-time from minimum boost indicator (idle) to max boost pressure (open throttle) at all times so the rider knows the engine load condition.

WARRANTY

BRP limited warranty covers the watercraft for one year.

New feature for 2012 model

©2011 Bombardier Recreational Products Inc., (BRP). All rights reserved.™, ® and the BRP logo are trademarks of Bombardier Recreational Products Inc. or its affiliates. Products are distributed in the USA by BRP US Inc. ¹ Traveling at 50 mph/80.47 km/h based on internal testing. ² Ultra-high molecular-weight polyethylene. Because of our ongoing commitment to product quality and innovation, BRP reserves the right at anytime to discontinue or change specifications, price, design, features, models or equipment without incurring any obligation. Printed in Canada.

ENGINE

- Supercharged, intercooled..... Supercharged, intercooled 1503 XHO Rotax 4-TEC engine provides reliable ultra-high performance in fresh or salt water, increased torque at low RPM, optimized power at all RPM levels and throttle positions.
- 1,494 cc four-stroke, Rotax with four valves per cylinder
- Multi-port fuel injection..... Better control of exhaust emission and power at all RPM ranges to reduce emissions and reduce fuel consumption.
- iTC™ (Intelligent Throttle Control) system** Operating electronically, this advanced throttle system starts you in neutral for easier dockside starts. It also features an activity-specific Touring /Sport mode, **ECO Mode** and Variable Trim System that can all be set to accommodate your riding style. The result is a more responsive, more intuitive ride.
- iControl Learning Key™ The programmable Learning Key allows you to limit the performance of the PWC based on rider skill level. Each of the two settings can be fine-tuned using the mode/set buttons.
- D-Sea-Bel™ system..... Combines a series of resonators and vibration-absorbing components to make Sea-Doo watercraft some of the quietest on the water.
- Closed-Loop Cooling System..... Uses coolant to keep the engine running at the ideal temperature, much like a car's radiator. Also keeps out corrosive saltwater and debris.
- Water/air separator..... Provides maximum airflow to engine and reduces water intrusion.
- Watertight digital ignition..... Provides optimal energy for a consistent spark, ensuring maximum performance.
- RPM limiter..... Protects engine from over-revving.
- Warning device..... Warns operator of engine and exhaust overheating, engine management and system failure.
- Handlebar-mounted..... Engine starts and stops with single, start/stop button user-friendly control button.
- Tip Over Protection..... Protects engine in case of turn over.
System (T.O.P.S.™)

PROPULSION SYSTEM

- iBR (Intelligent Brake..... The world's only on-water braking system, iBR lets & Reverse) system you stop up to 100 feet sooner than any other watercraft¹. All with the squeeze of a lever. And with its electronic reverse, it gives you a level of maneuverability that makes docking easier.
- Sea-Doo Direct Drive Delivers optimum performance with the Rotax engine.
propulsion system
- Replaceable UHMW² Provides long impeller life, less maintenance
wear ring and maximum thrust.
- Dual automatic vacuum Continuously removes water entering the engine
siphon pumps compartment.
- Large diameter drive shaft..... Maintains engine and pump alignment at all
with crowned spline design operating speeds.
- Stainless steel impeller Delivers improved acceleration, higher top speed
and less cavitation.
- Aluminum stator vanes..... Handles the high-performance engine without erosion.

OPTIONS

- Ski mode Protective cover
- Slow mode Sandbag anchor
- Cruise control Safety kit
- Depth finder Fire extinguisher
- Fold-down reboarding step Advanced TEC Trailer
- Removable dry bag for front storage

